

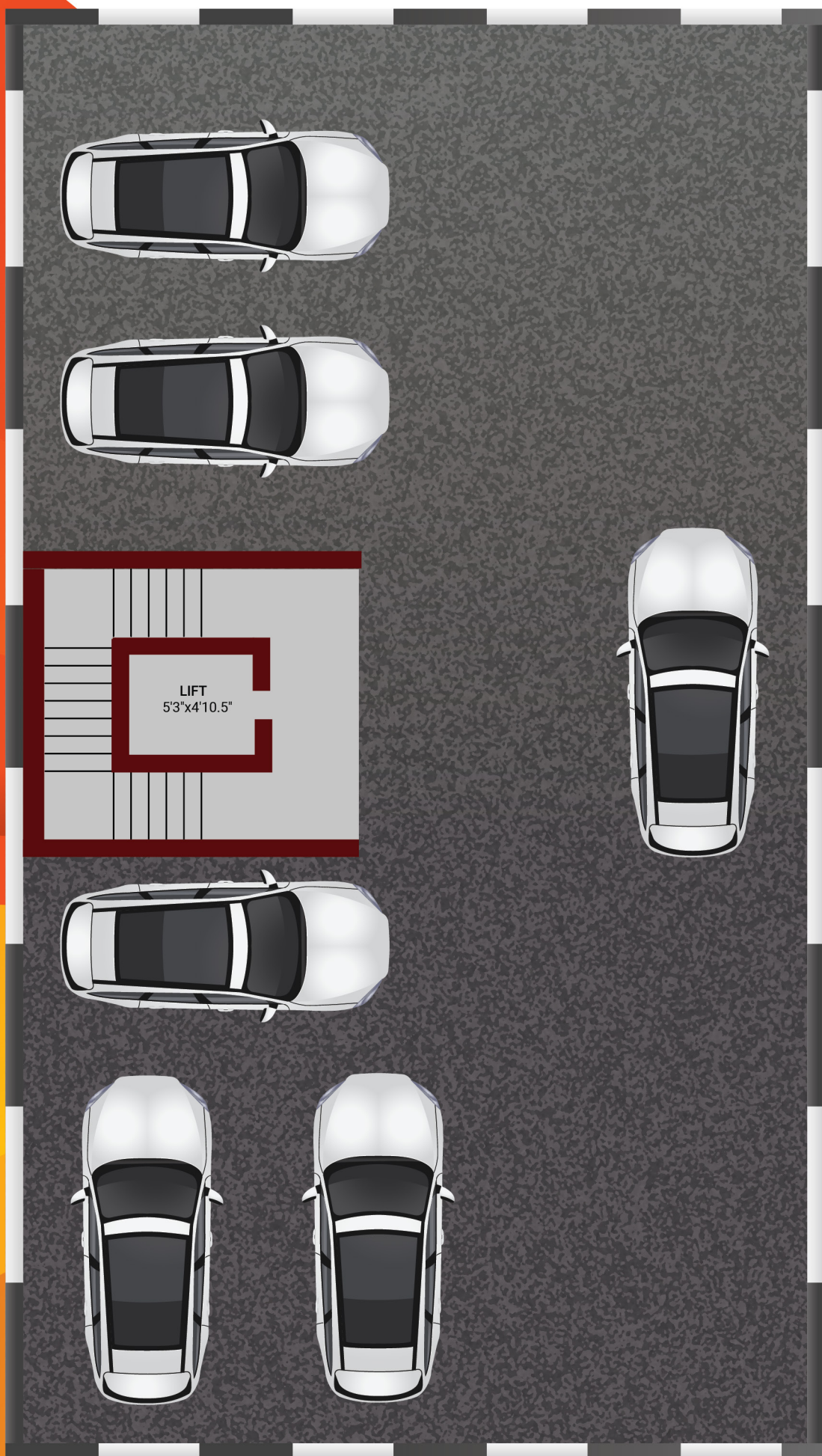
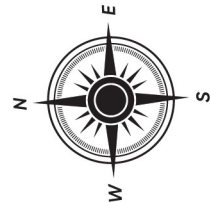


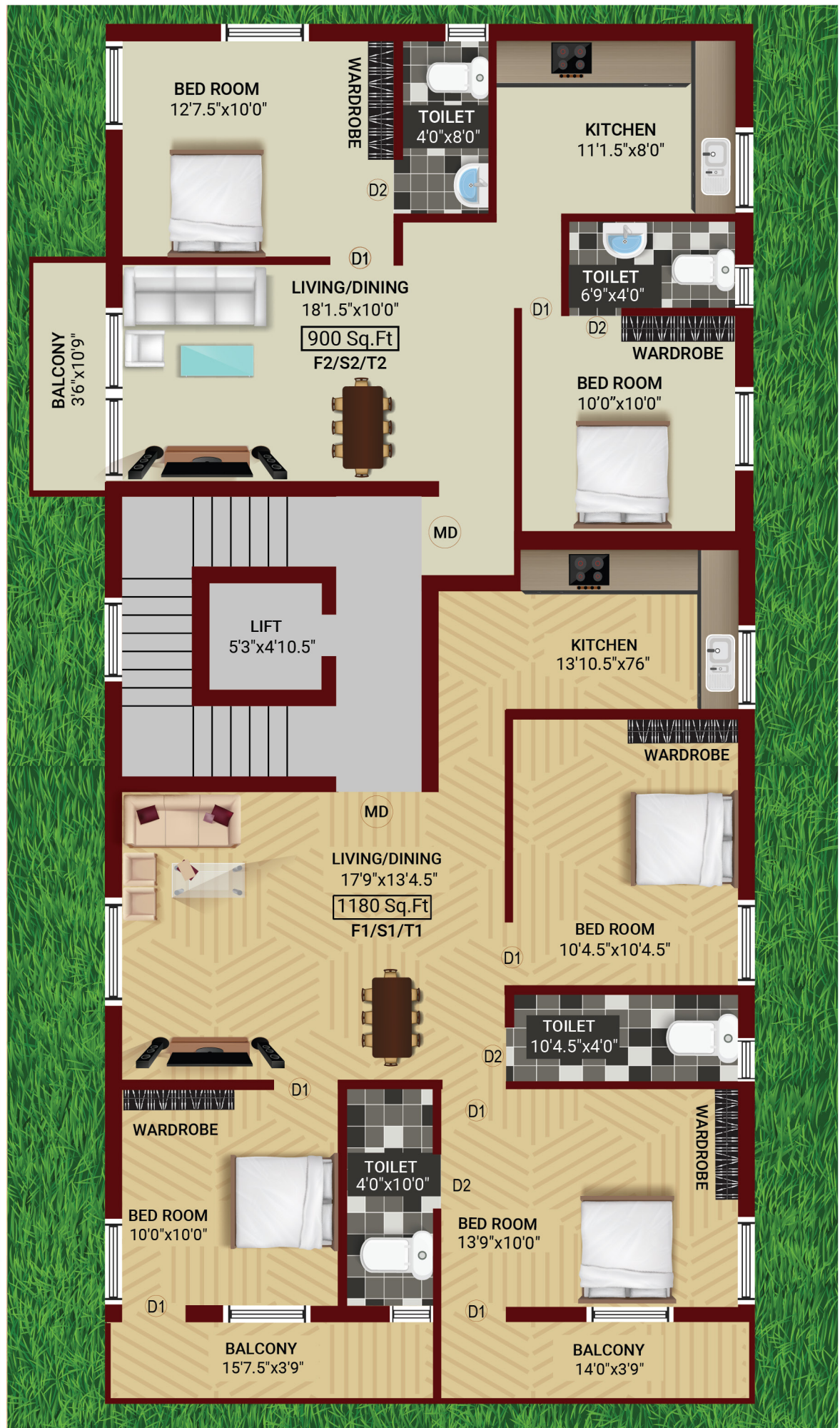
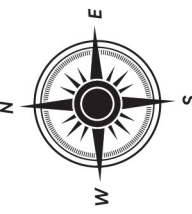
NEXA'S VEENA

Bakthi Vedantha, 1st Ave, Rayala Nagar, Chidambaram Nagar,
Ramapuram, Ch - 89.

 **87544 15020 | 96001 46922 | 98401 44022**

NO 983 , 53RD STREET, TVS COLONY, ANNA NAGAR WEST EXTN
CHENNAI - 600101 LANDMARK : OPP TO SKS HOSPITAL.





ONGOING PROJECTS



Rathiraj Enclave

Plot No: 937, 54th Street, Tvs Colony
Anna Nagar West Extn, ch-600101.
Flats starting from 1120-1300 sq.ft



The Milo

Plot No 268, 11th Street, TNHB Colony
Korattur, Chennai - 600080.
Flats starting from 1460-1560 sq.ft



The Nest

No.35/65, Srinivasapuram 2nd Main Road,
Korattur, Chennai 600076.
Flat starting from 850 - 1560sq.ft



Nithyas

Plot No: 33, 3rd Main Road,
Teachers Colony, Kolathur, Ch - 600099.
Flat starting from 975 sq.ft



Nakshatra

Block - L7, East Avenue, near police station,
Korattur, ch-600080.
Flat starting from 1100 sq.ft



Sunshine

Plot No.926, 37th street, TNHB Colony,
Korattur, Ch - 600099.
Flats starting from 1470 - 1495 sq.ft

PROJECT SPECIFICATION:

FOUNDATION & STRUCTURE

- ❖ RCC column, beam, and slab frame structure, Stilt + 3 floors.
- ❖ 9" thick outer walls & 4.5" thick internal walls with Wirecut Red Brick masonry filler and cement plastering.

FLOOR FINISHES

- ❖ Living, dining, and kitchen with SOMANY/KAJARIA vitrified flooring (2x2).
- ❖ Balconies, utilitarian vitrified tiles with a matte finish, and non-skid tiles.
- ❖ Bathroom - The ceiling will be coated with two coat of emulsion and premium glazed ceramic tiles up to a ceiling height of 300 x 450 mm and Anti-Skid tiles for the floor.

WALL COMPONENTS & PAINTING

- ❖ Outdoor Ace emulsion paints from Asian Paints.
- ❖ Internal Walls - Two coatings of putty were applied to the walls One coat of primer and Two coats of emulsion.

BATHROOM

- ❖ White glazed vitreous from Parryware makes EWC/IWC washbasin C.P fitting and other suitable fixtures from metro / Parryware / Carry on fittings.
- ❖ Health Faucet shall be provided in all toilets.
- ❖ Provision for exhaust fan & geyser.

DOORS & WINDOWS

- ❖ Main Entrance Door - Teak wood frame with an OST 40mm thick flush door that is 7'6" in height and has a Godrej lock or an equivalent company, tower bolt, a door viewer, and a door stopper.
- ❖ Bedroom Door - Solid wood frame with a flush door of 35 mm thickness, 7'0" in height, and locks made by Godrej or an equivalent company, as well as a thumb turn and a key.
- ❖ Bathroom doors - Solid wood frame, moulded skin, and a thumb turn lock made by Godrej or a comparable company.
- ❖ Windows - French UPVC openable windows and MS grills.

POWER & ELECTRICAL

- ❖ A three-phase electrical supply connection with a switchover facility, copper wiring with the ISI brand on it, and high-quality modular switches for power and lighting.
- ❖ As specified, provide the necessary lighting, fans, and plug points will be provided for all living spaces as per the client's requirements.